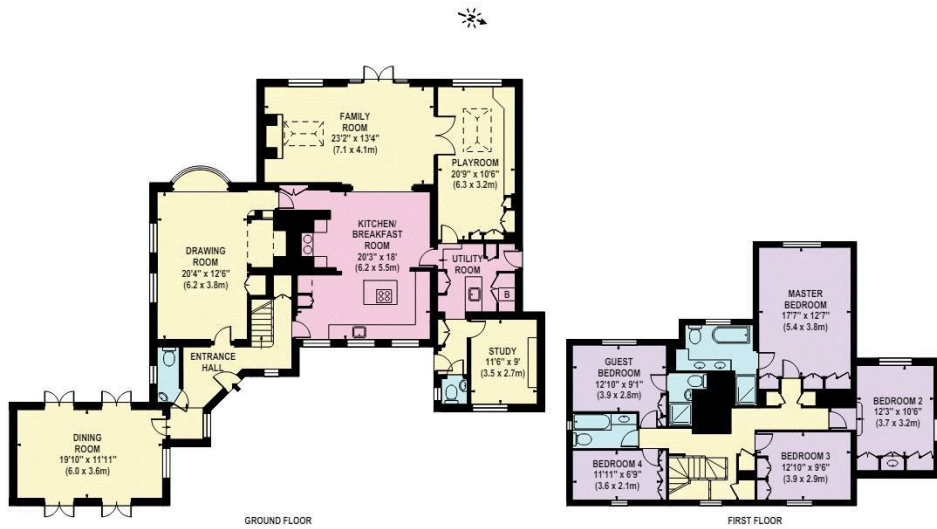


Howard Morley
& Sons



PER MONTH

£8,000 Per Month
Polsted Lane



APPROX. GROSS INTERNAL FLOOR AREA 3124 SQ FT / 290 SQ M

Whilst every effort has been made to ensure the accuracy of the floorplan contained herein, measurements of floors, ceilings and walls are approximate and are for guidance purposes only. Measurements are taken from the internal face of walls and doors. Measurements are taken from the internal face of walls and doors. Measurements are taken from the internal face of walls and doors. Measurements are taken from the internal face of walls and doors.

5

3

4



Energy Efficiency Rating		Current	Potential
Very energy efficient - lower running costs			
(92 plus) A			
(81-91) B			
(69-80) C			
(55-68) D			
(39-54) E			
(21-38) F			
(1-20) G			
Not energy efficient - higher running costs			
England & Wales		47	71
		EU Directive 2002/91/EC	

Agents Note: Whilst every care has been taken to prepare these particulars, they are for guidance purposes only. All measurements are approximate and are for general guidance purposes only and whilst every care has been taken to ensure their accuracy, they should not be relied upon and potential buyers/tenants are advised to recheck the measurements

OFFICE ADDRESS
 276 High Street
 Guildford
 Surrey
 GU1 3JL

OFFICE DETAILS
 01483 575 304
 lettings@hmorley.co.uk
 hmorley.co.uk